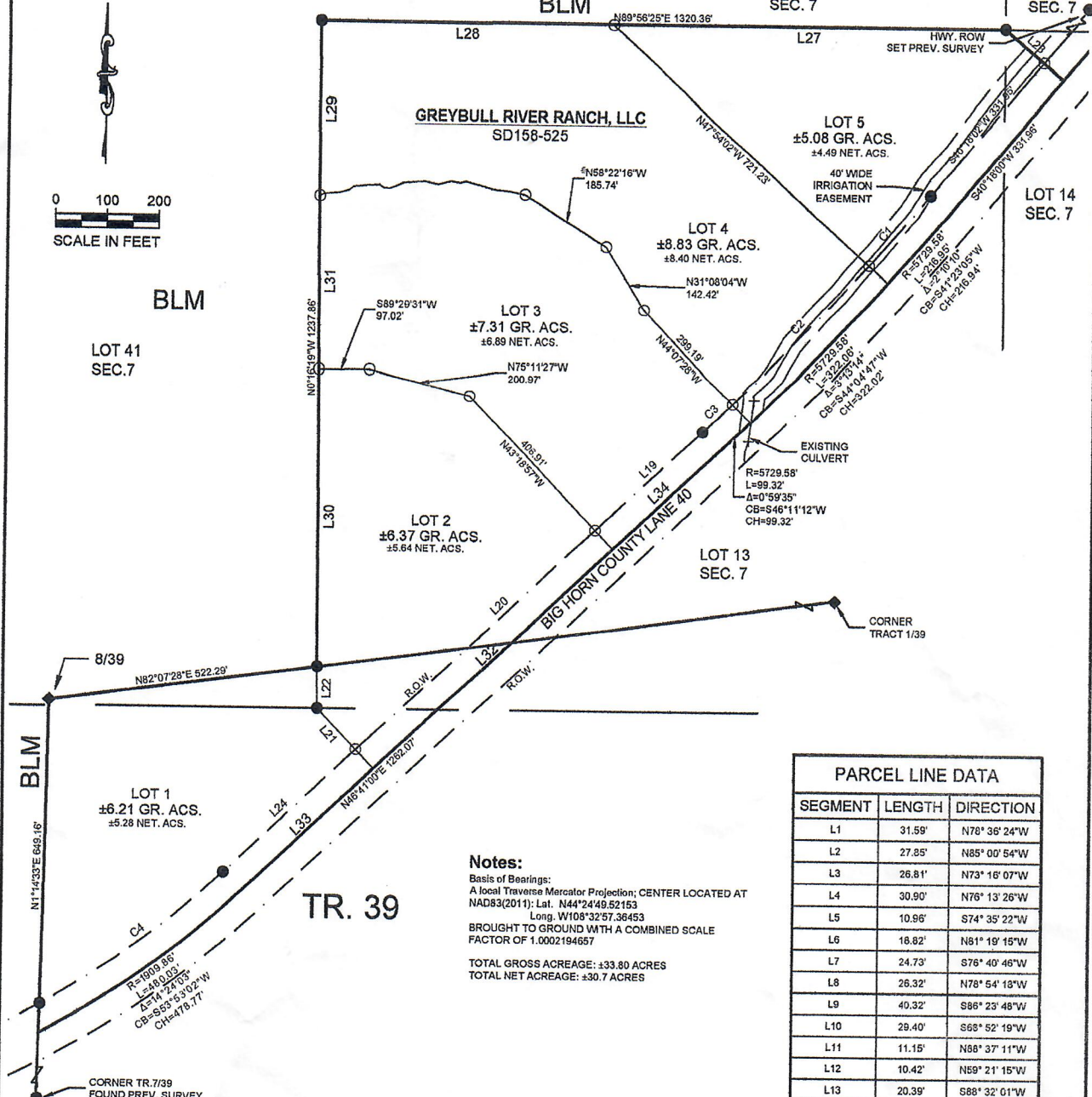


T. 51 N., R. 97 W., 6TH P.M. (RESURVEY) BLM

LOT 10  
SEC. 7

LOT 9  
SEC. 7

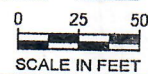
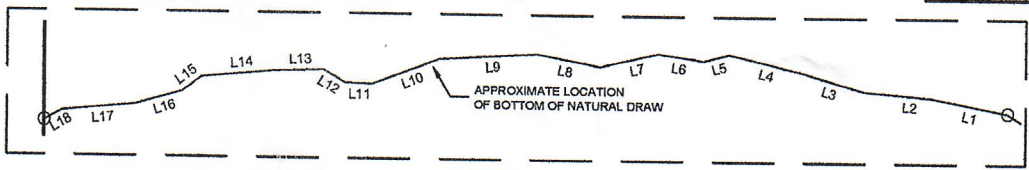


PARCEL LINE DATA		
SEGMENT	LENGTH	DIRECTION
L1	31.59'	N78° 36' 24"W
L2	27.85'	N85° 00' 54"W
L3	26.81'	N73° 16' 07"W
L4	30.90'	N76° 13' 26"W
L5	10.96'	S74° 35' 22"W
L6	18.82'	N81° 19' 15"W
L7	24.73'	S78° 40' 46"W
L8	26.32'	N78° 54' 18"W
L9	40.32'	S86° 23' 48"W
L10	29.40'	S68° 52' 19"W
L11	11.15'	N88° 37' 11"W
L12	10.42'	N59° 21' 15"W
L13	20.39'	S88° 32' 01"W
L14	29.94'	S84° 17' 25"W
L15	10.10'	S53° 11' 06"W
L16	19.80'	S73° 37' 10"W
L17	30.34'	S84° 29' 04"W
L18	8.38'	S60° 40' 09"W
L19	282.95'	S46° 41' 00"W
L20	629.82'	S46° 41' 00"W
L21	159.19'	S43° 13' 11"E
L22	82.79'	S0° 17' 18"E
L23	148.03'	S49° 42' 00"E
L24	311.87'	S46° 41' 00"W

**Notes:**  
 Basis of Bearings:  
 A local Traverse Mercator Projection; CENTER LOCATED AT  
 NAD83(2011): Lat. N44°24'46.52153  
 Long. W108°32'57.36453  
 BROUGHT TO GROUND WITH A COMBINED SCALE  
 FACTOR OF 1.0002194657  
 TOTAL GROSS ACREAGE: ±33.80 ACRES  
 TOTAL NET ACREAGE: ±30.7 ACRES

PARCEL CURVE DATA			
SEGMENT	LENGTH	RADIUS	DELTA
C1	178.39'	5679.58'	001°47'58"
C2	323.71'	5679.58'	003°15'56"
C3	65.01'	5679.58'	000°39'21"
C4	738.48'	1859.86'	022°45'00"

- LEGEND**
- REBAR WITH 2 1/2" CAP SET
  - REBAR & ALUM. CAP FOUND
  - ◆ STONE FOUND
  - INDICATES BREAK IN LINE
  - - - HWY R.O.W.
  - INTERIOR SECTION LINES



<p>1402 Stampede Avenue Cody, WY 82414 Phone: 307.537.6251 www.m-m.net</p>	DRAWN BY: ECR PLOD BY: ECR/KGM CHK BY: SDF DATE: 06/2022	GREYBULL RIVER RANCH BURLINGTON WYOMING	PROJECT NO. 10106.00101 SHEET NUMBER 1 OF 4
	SIMPLE SUBDIVISION TRACT 39 & LOTS 13 & 14 OF SECTION 7, T. 51 N., R. 97 W., 6TH P.M. RESURVEY BIG HORN COUNTY, WYOMING		